

WinRELAY V2.3

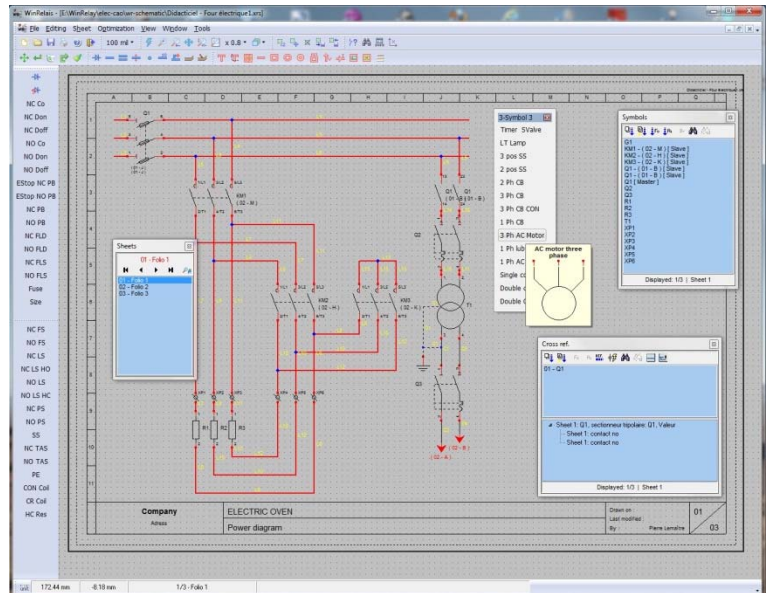
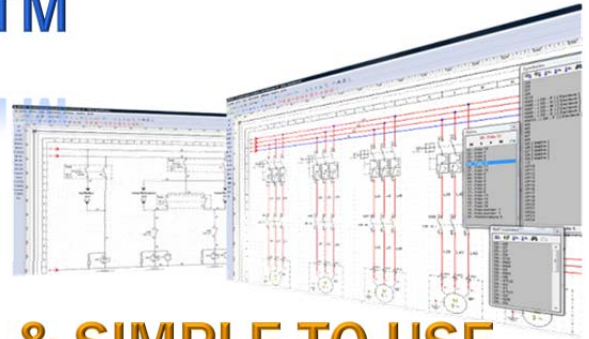
Electrical CAD Software

COMPREHENSIVE, ECONOMICAL & SIMPLE TO USE

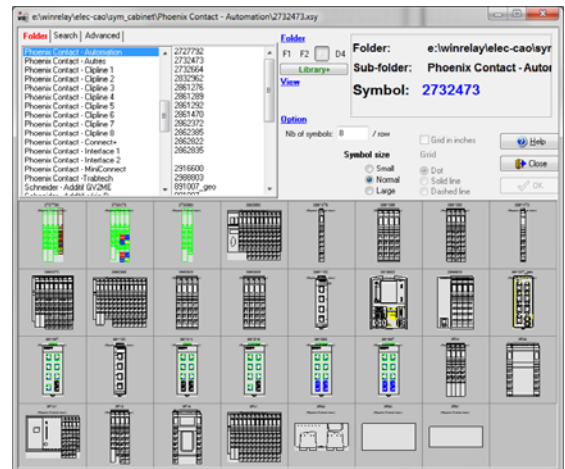
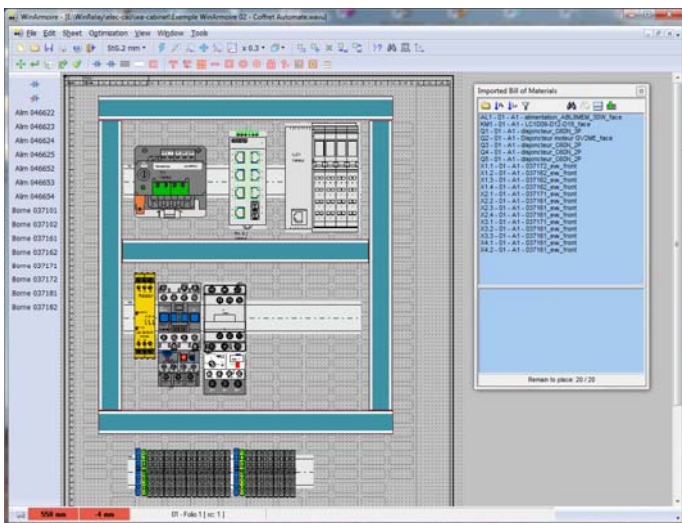
WinRelay™ software enables electrical circuit design (architectural and schematic), with applications in construction and industry. It is also designed to generate pneumatic and hydraulic diagrams and more.

Main Features :

- Limits: 3000 sheets, 2 million symbols...
- More than 3000 symbols provided (ISO, IEC, NEMA,...)
- New symbol creation with *WinSymbol* editor
- Component libraries visualization with *ViewSymbol*
- Installation plans for electrical enclosures with *WinCabinet*
- Product database management with *WinRelayBase*
- Cross-reference management.
- Automatic or manual terminal block generation.
- Automatic or manual cable schedule generation.
- Automatic or manual diagram numbering.
- Cross-referenced sheet entries and ports.
- Schematics export in DXF, DWG, PDF, WMF, EMF formats.
- Export marker and label lists in CSV format.
- Interface 100% customizable (menus & toolbars).
- Cancellation of all operations (15 levels).
- **Unconstrained creative freedom.**
- Print-outs to scale 1 or adapted, in B&W or in color.
- Displacement, delete and block copy functions.
- Cut / Copy / Paste one part of a schematic to another.
- Full HELP facility, learning guides and online training videos.



- Enhanced with the *WinCabinet* program that enables installation plans for small and large electrical enclosures.
- Support material definition (Telequick, perforated steel, etc).
- DIN rails and trunking dimensioning and placement.
- Libraries of more than 3500 views for cabinets (*Hager, Legrand, Phoenix Contact, Schneider Electric and more*).



WinRELAY™ can be obtained with a:

- Single-User PROFESSIONAL License
- Multi-User PROFESSIONAL License
- Institution EDUCATION License

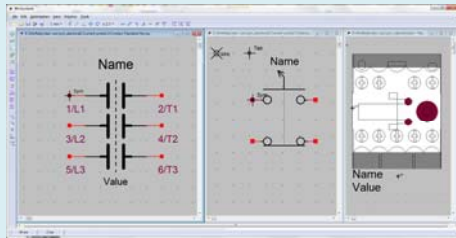


2095 rue Frank-Carrel, Bureau 216 - Québec, Qc, G1N 4L8 - Tel. : 418.948.4050
 E-mail : info@cogniscotech.com
 URL : www.cogniscotech.com

Free trial version available at :
www.winrelay.com

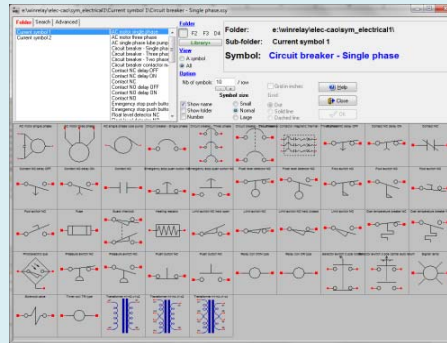
WinRELAY™: comprehensive, economical and simple to use

Applications included with WinRELAY™



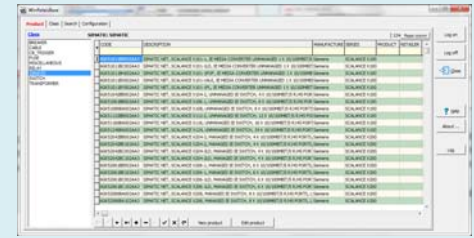
WinSymbol

This application can be used to modify existing symbols and/or create new ones. A DXF import makes manufacture symbol (or enclosure thumbnail) recovery possible.



ViewSymbol

Thanks to this app you can quickly visualize, search for, or print out symbols from the same library.



WinRelayBase

This application offers full product database management. Although its use is not obligatory to produce nomenclature, WinRelayBase allows the generation of nomenclature that carry manufacture information (code, class, constructor, etc.).

List of Functionalities :

Libraries

- Basic library of approximately 3000 electro-technical symbols (motors, contactors, circuit breakers...).
- Library of more than 4000 products views for panel design
- Library extensions : grafacet, automotive, pneumatic, and hydraulic.
- Electronic library: 6000 electronic symbols (circuits CMOS, TTL, ampli...).

WinSymbol program, within *WinRelay™*, allows you to create your own symbol library (1 symbol = 1 file). DXF and DWG formats import with *WinSymbol*.

Models, title blocks and reference frames

- Each sheet has its own layout, reference frame, and title block.
- Schematic model creation.
- Title blocks are customizable and editable.
- Reference frames : by default or customized.
- Picture insert (BMP, JPG or PNG) in title blocks or schematics.

Cross Referencing

- Definition of master / slave links in *WinRelay™* or during symbol conception in *WinSymbol*.
- Multi-contact symbol management.
Automatic reference settings possible.

Numbering

- Manual or automatic diagram numbering.
- Preset or customized numbering setup (e.g. %I1.0, %I1.1, %I1.2...).

Nomenclature

- Symbol nomenclature: customized table (n° of columns, content...) to be placed on the sheets.
- Automatic generation, then manual editing possible.
- Data call-up from the product database.

Database

- Product database managed by *WinRelayBase*.
- Data can be integrated into the nomenclature.
- Format MS Access (MDB) and server MS SQL.
- New products can be added
- Manufacture databases can be included

Terminal Blocks

- Automatic or manual terminal block generation.
- Sorting by destination.
- Full or semi-automatic renumbering of terminal blocks.
- Later manual editing/modification possible.
- Automatic increment of terminal block numbers.
- Terminal block size modification.

Cable List

- Cable symbol can be placed.
- Data call-up from the product database.
- Generation and/or export of CSV from cable list.

Automatic generation using diagrams

- From the wire number list.
- From the nomenclature.
- From the cable list.
- From the terminal blocks.
- From the sheets list.

Import / Export

- Cut / Copy to a word processor, for easy document production.
- Export using DXF, DWG, PDF, EMF and WMF formats.
- Export marker and label lists in CSV format
- Import/Export CSV, XLS and MDB from tables (nomenclatures, lists)
- Image import in BMP, JPG or PNG formats.
- Drawing import in DXF and DWG formats in *WinSymbol*.
- Print-outs of diagrams and schematics.

Other Features

- Work grid with adjustable spacing from 0.5 mm to 4 mm.
- Printout formats: A4, A3 or customized.
- Electrical links for conductors between sheets (cross-referencing).
- Preview of symbol before placement. Symbol size may be reduced by half.
- 30 predefined types of wires & cables. Several conductors may be placed simultaneously. Customized conductors, bicolor...
- Unlimited Zoom level - Automatic Zoom - previous views return: 4.
- Drawing functions: rectangles, rounded rectangles, lines, functions, voltage, current, text.
- Modifiable drawing lines : color, thickness and style.
- Symbol sidebar : Rapid symbol management - Modify / Copy / Delete.
- Image insert (BMP, JPG, PNG) from texts, text zones and tables.
- Note insert (Annotation).
- Link manager.

Configuration Required

- PC with Windows XP, 7, 8, 10 (32 or 64 bits).
- Network connection: Windows Server 2003 / 2008 or Citrix™.



2095 rue Frank-Carrel, Bureau 216
Québec, Qc, G1N 4L8 - Tel : 418.948.4050
E-mail : info@cogniscotech.com
URL : www.cogniscotech.com